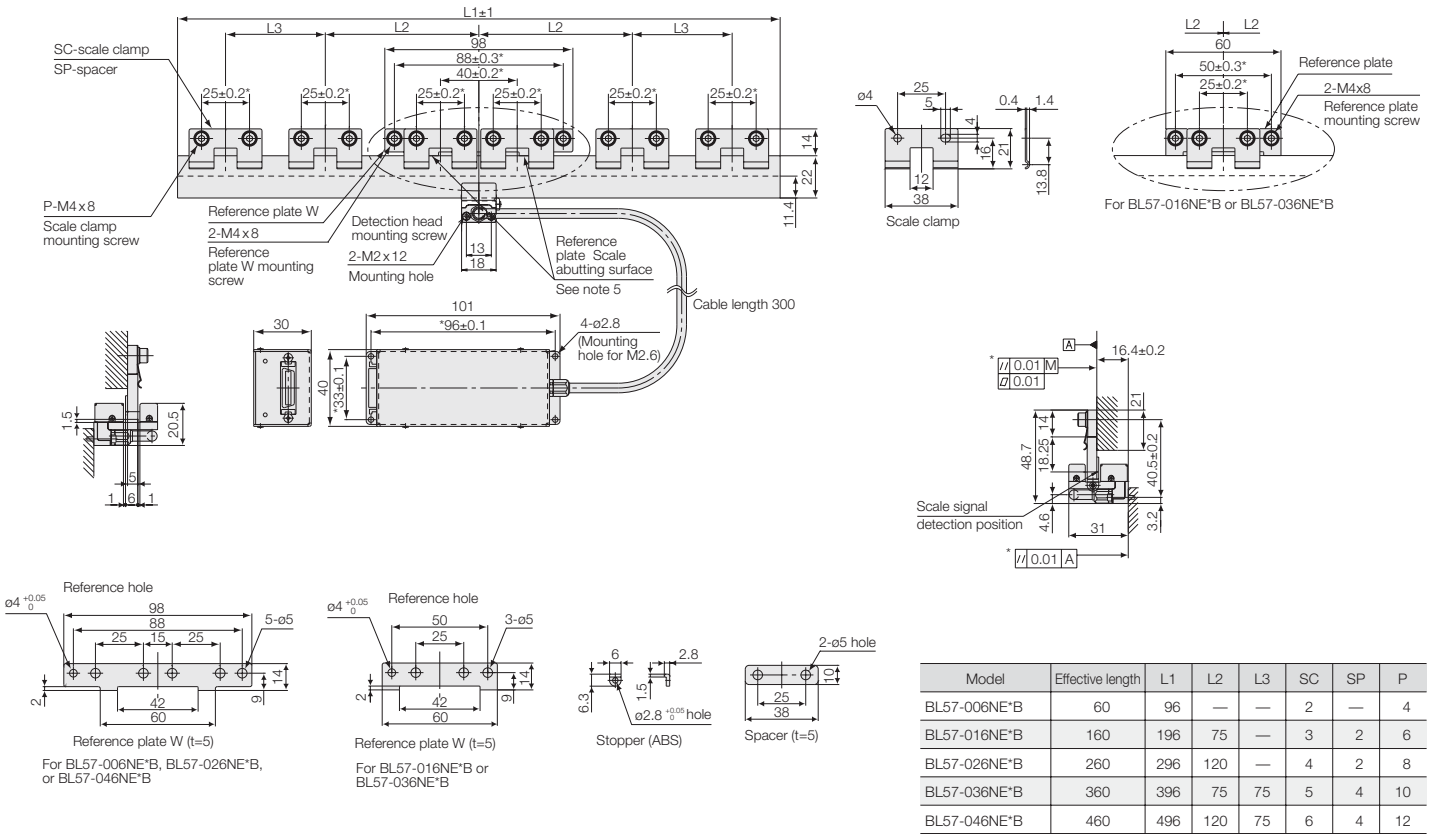
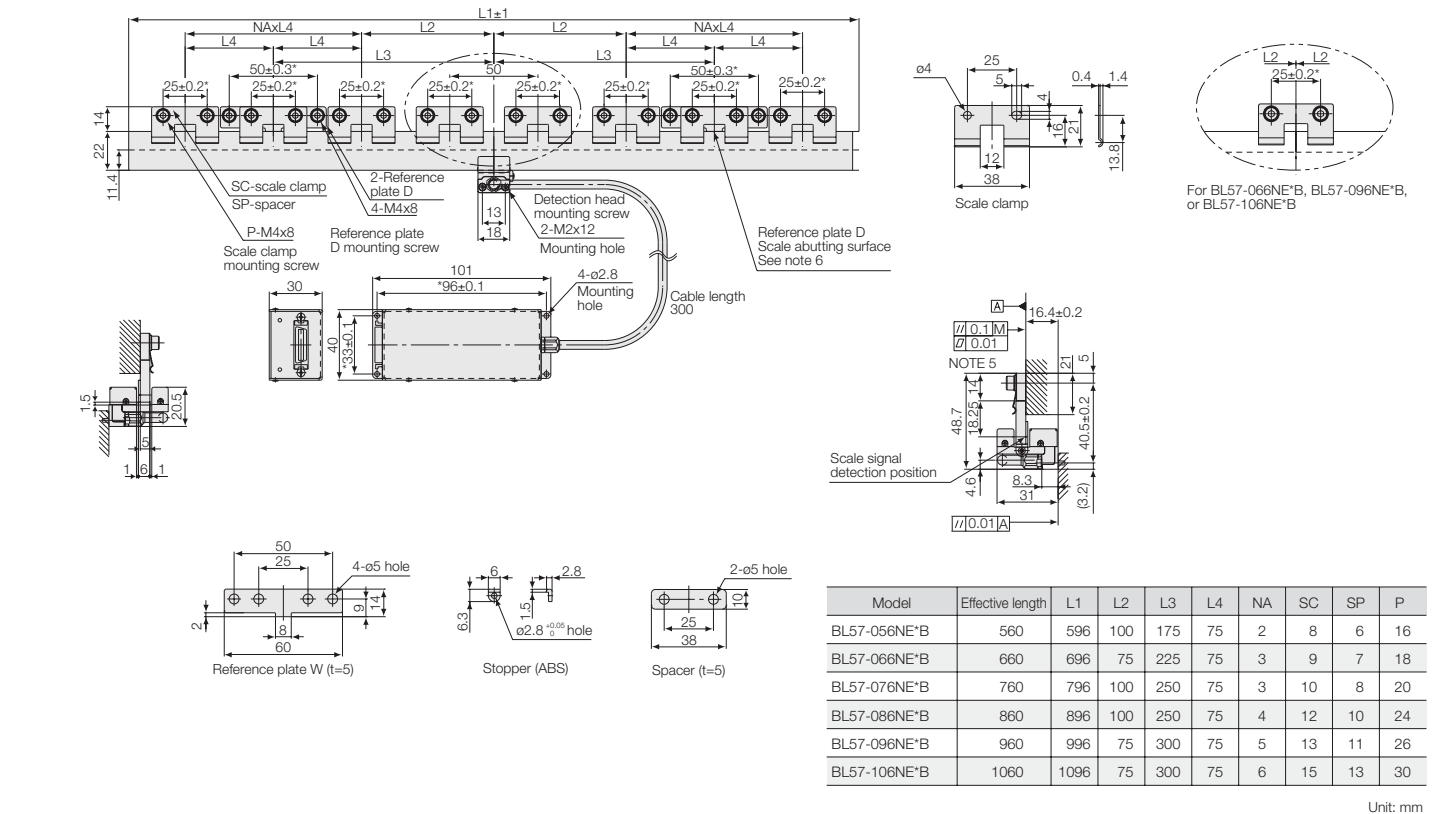


## External Dimensions

### ● BL57-xxxNE\*B (Effective length: 006 / 016 / 026 / 036 / 046)



### ● BL57-xxxNE\*B (Effective length: 056 / 066 / 076 / 086 / 096 / 106)



Note 1: The items marked by an asterisk indicate the machining dimensions on the mounting surface. Note 2: The surface roughness of the scale mounting surface is  $R_{max} = 6.3 S$  ( $250\mu$  inch). Note 3: The surface roughness of the detector head mounting surface is  $R_{max} = 12.5 S$  ( $500\mu$  inch). Note 4: "M" refers to the machine guide. Note 5: When mounting the reference plate (reference plate W), adjust the plate so that the parallelism between the corresponding scale abutting surface and the machine guide is 0.01mm or less.