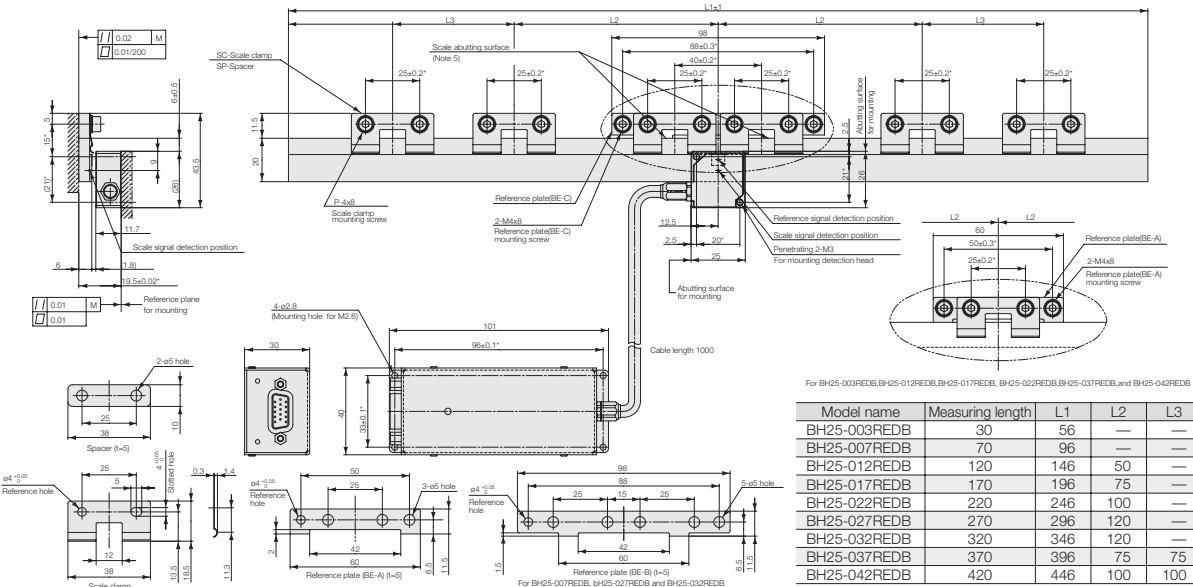
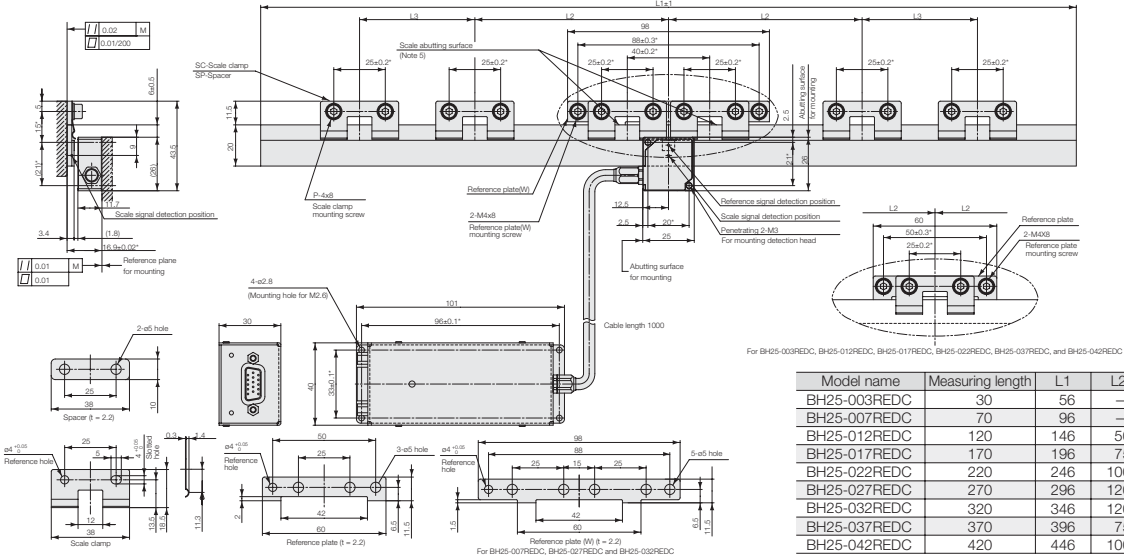


● BH25-RED BH25-***REDB



Notes: 1. The items marked by an asterisk indicate the machining dimensions on the mounting surface. 2. The surface roughness of the scale mounting surface is Rmax = 6.3S(250µinch). 3. The surface roughness of the detector head mounting surface is Rmax = 6.3S(250µinch). 4. *M refers to the machine guide. 5. Mount and adjust the paired reference plates so that their reference surfaces have a parallelism of 0.01 or less with respect to the machine guide.

● BH25-RED BH25-***REDC



Notes: 1. The items marked by an asterisk indicate the machining dimensions on the mounting surface. 2. The surface roughness of the scale mounting surface is Rmax = 6.3S (250µinch). 3. The surface roughness of the detector head mounting surface is Rmax = 6.3S (250µinch). 4. *M refers to the machine guide. 5. Mount and adjust the paired reference plates so that their reference surfaces have a parallelism of 0.01 or less with respect to the machine guide.

Unit: mm

Main specifications

Model	BH25-RED	BH25-NED
Measuring length (mm)	30/70/120/170/220/270/320/370/420 (Low expansion glass/Blue plate glass)	
Entire scale length	Measuring length +26mm	
Maximum travel length	Measuring length +10mm	
Accuracy (at 20°C)	±0.5µm (30 to 170mm) ±1.0µm (220 to 420mm)	
Grating pitch	1.0µm	
Signal pitch	250nm	
Zero point	With zero point	None
Direction of starting point detection	For one	None
Output signal	A/B aspect (EIA-422 conforming) and analog output (1Vp-p) and Intarporta BD connection	
Output resolution	A/B aspect (12.5,6.25nm), analog output (250nm), and BD connection(Depend on the number of partitions.)	
Temperature coefficient	-0.7 x 10 ⁻⁶ /°C (Low expansion glass) 8 x 10 ⁻⁶ /°C (Blue plate glass)	
Light source	Semiconductor laser Wavelength, 780nm, Maximum output 10mw	
Detection system	Diffraction grating scanning system	
Operating temperature range	+10°C to +30°C (No condensation)	
Storage temperature range	-10°C to +50°C (Humidity less than 60%)	
Maximum response speed	700mm/s (When connected with BD96)	