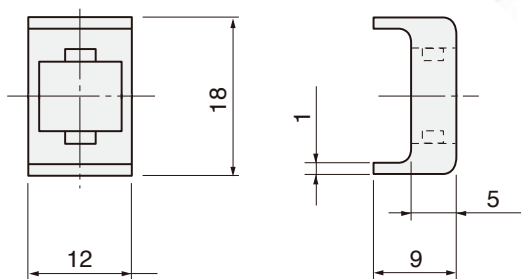
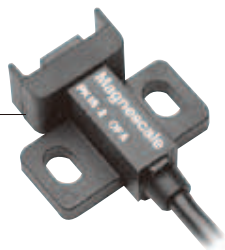


Accessory

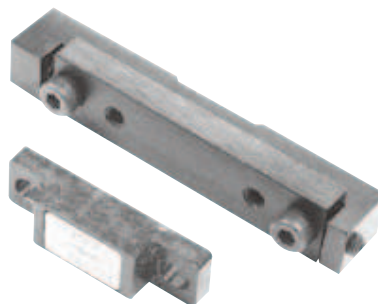
Wiper PZ3 (for SET-P15/-P16)

Wiper PZ3



Unit: mm

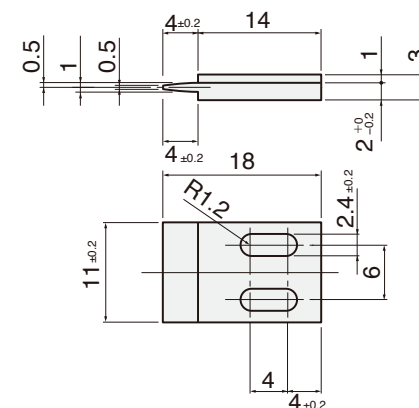
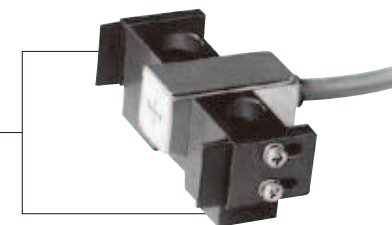
Magnet mounting block PG-1 (for magnet PG-10/PG-104)



- Magnet (PG-104, PG-10) can be finely adjusted by ± 1 mm in X direction.
- Very useful in setting a reference point

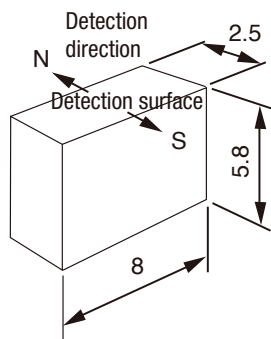
Wiper PH-1 (for magnet sensor PH-11, PH-100, or PH-500)

Wiper PH-1



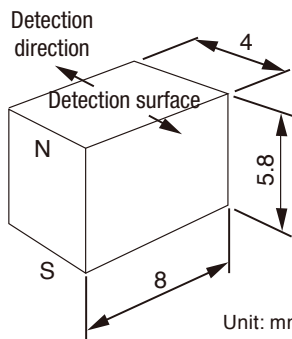
Unit: mm

Magnet PG-9010 (for SET-P15/-P16) singly



Unit: mm

Magnet PG-9104 singly PG-9104



Unit: mm

- The operating range can be changed using magnet (PG-9104). This relationship is approximately as follow:
Operating range = $8 + 4(N - 1)$
 ± 1 mm ($N = 1, 2, 3 \dots$)

CE15 Series extension cable for PK16

(Mini-DIN 6-pin plug ↔ mini-DIN 6-pin socket)

Model	Cable length
CE-15 -3	3 m
-5	5 m
-10	10 m
-15	15 m
Compatible model	MJ100/110